



Air-Cooled MIG Barrels

Robotic Curved 35, 45 & 55 Degree

D/F MACHINE SPECIALTIES
 1750 Howard Drive
 North Mankato, MN 56003
 Phone: (507) 625-6200
 Fax: (507) 625-6203

AIR-COOLED CURVED 35, 45, AND 55 DEGREE ROBOTIC MIG BARRELS

The rugged Air-Cooled Series 400 Curved Barrel configurations come pre-assembled and ready to install in 35, 45, and 55 degree models. The models CA-C/CA-T feature individual replaceable service connections with a removable cable/hose sheath to add to the durability and long life of these gun assemblies. Each D/F robotic torch is fully assembled and ready to install. In order to make the installation complete, the code number, wire size and type, wire feeder make/model (Lincoln®, Miller®, TWECO®, ESAB®, EURO, etc.), and feeder adapter inlet as needed must be specified when ordering.

MODEL EXPLANATION

CA-C - Curved, Air-Cooled, Collet Action (Slip-in Current Tip)

CA-T - Curved, Air-Cooled, Threaded Current Tip

FEATURES

- 400 Amp CO₂, 260 Amp Argon Current Capacity - 1/0 Power Cable
- Several Nozzle Body Configurations - Chrome Plated Brass Front End, Heavy Duty Copper Nozzle
- Heavy Duty Brass Inner Body - High Temperature Insulation

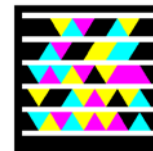
ORDERING INFORMATION (Complete Assemblies)

DESCRIPTION	CODE NO.					
	3 Ft.	4 Ft.	5 Ft.	6 Ft.	7 Ft.	8 Ft.
Model CA-C/CA-T 35°	17840	17841	17842	17843	17844	17845
Model CA-C/CA-T 45°	17839-3	17839-4	17839-5	17839-6	17839-7	17839-8
Model CA-C 55°	15518	15524	15530	15536	15547	15578
Model CA-T 55°	15521	15527	15533	15539	15555	15548



MODEL SPECIFICATIONS - CONTINUOUS DUTY CYCLE

Model	Current Capacity	Length	Body Diameter	Weight (approx.)	Recommended Wire Diameter Range	Instruction Manual
CA-C/CA-T 35°	400 amp CO ₂ 260 amp Argon	14.375"	1.45"	1.8 lbs.	.030"-.062" Hard/Cored, 3/64"-1/16" AL	435
CA-C/CA-T 45°	400 amp CO ₂ 260 amp Argon	13.625"	1.45"	1.8 lbs.		445
CA-C/CA-T 55°	400 amp CO ₂ 260 amp Argon	13.125"	1.45"	1.8 lbs.		455



D/F® is the registered trademark of D/F Machine Specialties, Inc. ABB®, Binzel®, BUG-O®, Daihen®, Esab®, Fanuc®, Fronius®, Hobart®, Kuka®, Lincoln®, Linde®, Mavrix®, Miller®, Motoman®, OTC®, Panasonic®, Pandjris®, Red-D-Arc®, Thermal Arc®, TWECO®, Welding Alloys®, and names of other manufacturers are registered trademarks of their respective companies. Those manufacturers mentioned in this catalog are for reference only. D/F Machine Specialties is in no way affiliated with these companies.